

# FLAT ROOF ACCESSORIES FOR WATERPROOFING MEMBRANES POLYFIN<sup>®</sup> (FPO / TPO) AND O.C.-PLAN<sup>®</sup> (ECB)



PRACTICAL

SAFE

PROVEN

# FLAT ROOF ACCESSORIES FOR WATERPROOFING MEMBRANES POLYFIN® (FPO / TPO) AND O.C.-PLAN® (ECB)

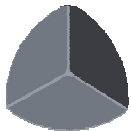
## FORMED PARTS



### EXTERNAL CORNER

For professional creation of external corners, 90°, length of edge 100 mm

5101 / 001-01 Polyfin® External Corner, light grey	25 Pieces / Box
5001 / 001-01 O.C.-Plan® External Corner, black	25 Pieces / Box



### INTERNAL CORNER

For professional creation of external corners, 90°, length of edge 100 mm

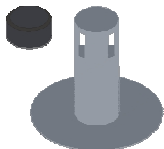
5102 / 001-00 Polyfin® Internal Corner, light grey	25 Pieces / Box
5002 / 001-00 O.C.-Plan® Internal Corner, black	25 Pieces / Box



### DOMELIGHT CORNER PATCH

Application: for corners Dome lights with roofing membranes material

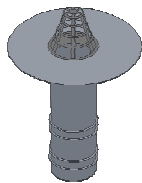
5103 / 001-00 Polyfin® Domelight Corner Protection, light grey	NW 80	100 Pieces / Box
5003 / 001-00 O.C.-Plan® Domelight Corner Protection, black	NW 80	100 Pieces / Box



### ROOF VENTILATOR WITH REMOVABLE HAT

Application: their Review on Extractor - / Vent Tube, drying out of thoroughly moistened roof layers packages

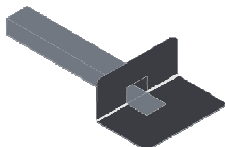
5104 / 001-01 Polyfin® Roof Ventilator, light grey	NW 75 / Height 225 mm	5 Pieces / Box
5104 / 002-02 Polyfin® Roof Ventilator, light grey	NW 100 / Height 270 mm	5 Pieces / Box
5004 / 001-01 O.C.-Plan® Roof Ventilator, black	NW 75 / Height 225 mm	5 Pieces / Box
5004 / 002-02 O.C.-Plan® Roof Ventilator, black	NW 100 / Height 270 mm	5 Pieces / Box



### ROOF OUTLET

Application: for insertion in already available roof drains (renovation), length 250 mm

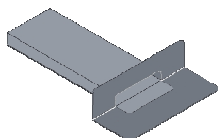
5105 / 001-01 Polyfin® Roof Outlet, light grey	NW 70	5 Pieces / Box
5105 / 002-01 Polyfin® Roof Outlet, light grey	NW 100	5 Pieces / Box
5105 / 003-01 Polyfin® Roof Outlet, light grey	NW 125	5 Pieces / Box
5005 / 001-01 O.C.-Plan® Roof Outlet, black	NW 70	5 Pieces / Box
5005 / 002-01 O.C.-Plan® Roof Outlet, black	NW 100	5 Pieces / Box
5005 / 003-01 O.C.-Plan® Roof Outlet, black	NW 125	5 Pieces / Box



### WATER OUTLET

Application: a rectangular cross section 100 x 65 mm, length 425 mm, 90° angled

5107 / 001-01 Polyfin® Water Outlet, light grey	5 Pieces / Box
5007 / 001-01 O.C.-Plan® Water Outlet, black	5 Pieces / Box

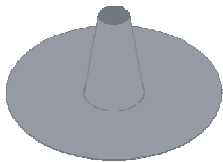


### EMERGENCY OUTLET

With a straight base plate, dimensions: 300 mm x 100 mm, wall thickness: 5 mm, tube length: 500 mm

8102 / 101-01 Emergency Outlet with Polyfin® sealing collar, light grey	5 Pieces / Box
8102 / 001-01 Emergency Outlet with O.C.-Plan® sealing collar, black	5 Pieces / Box

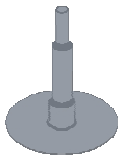
## SEALING SLEEVE



### SEALING SLEEVE A

Application: for sealing of lightning conductors and cable penetration, inner diameter 15 - 30 mm, height 12 cm

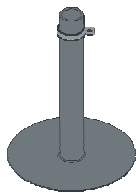
5106 / 001-00 Polyfin® Sealing sleeve A, light grey	10 Pieces / Box
5006 / 001-00 O.C.-Plan® Sealing sleeve A, black	10 Pieces / Box



### SEALING SLEEVE B

Application: for sealing of lightning conductors and cable penetration, triply graded, inner diameter of 10 mm / 18 mm / 29 mm, height 20 cm / 13 cm / 4 cm

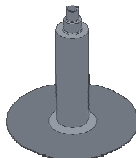
5106 / 003-01 Polyfin® Sealing sleeve B, light grey	5 Pieces / Box
5006 / 003-01 O.C.-Plan® Sealing sleeve B, black	5 Pieces / Box



### SEALING SLEEVE C

Application: for sealing of punctual fall protection with stainless steel clamp, inner diameter 16-20 mm, height 24 cm

5106 / 005-03 Polyfin® Sealing sleeve C, light grey	5 Pieces / Box
5006 / 005-03 O.C.-Plan® Sealing sleeve C, black	5 Pieces / Box



### SEALING SLEEVE D

Application: for sealing of lightning conductors, cable lead-throughs and guardrail posts, triply graded, inner diameter of 8 mm / 16 mm / 30 mm, height 17 cm / 16 cm / 15 cm

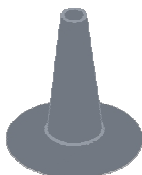
5106 / 004-02 Polyfin® Sealing sleeve D, light grey	5 Pieces / Box
5006 / 004-02 O.C.-Plan® Sealing sleeve D, black	5 Pieces / Box



### SEALING SLEEVE E

Application: for sealing of round pipes, inner diameter of 40 – 160 mm, height 18 cm

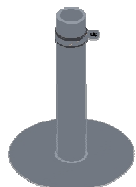
5106 / 002-00 Polyfin® Sealing sleeve E, light grey	5 Pieces / Box
5006 / 002-00 O.C.-Plan® Sealing sleeve E, black	5 Pieces / Box



### SEALING SLEEVE F

Application: universal sealing sleeve, inner diameter of 38 – 64 mm, height 20 cm

5106 / 006-04 Polyfin® Sealing sleeve F, light grey	5 Pieces / Box
5006 / 006-04 O.C.-Plan® Sealing sleeve F, black	5 Pieces / Box

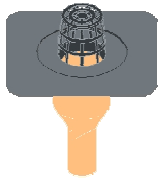


### SEALING SLEEVE G

Application: universal sealing sleeve, inner diameter of 26 mm, height 22 cm

5106 / 007-04 Polyfin® Sealing sleeve G, light grey	5 Pieces / Box
5006 / 007-04 O.C.-Plan® Sealing sleeve G, black	5 Pieces / Box

## ROOF OUTLET



### POLYFIN ROOF OUTLET VERTICAL

Made of polyurethane, thermal insulated with leaf guard, integrated sealing collar made of polymeric bitumen

8014 / 101-00	DIA 75 (Type 1)	5 Pieces / Box
8014 / 102-00	DIA 110 (Type 1)	5 Pieces / Box
8014 / 103-00	DIA 125 (Type 1)	5 Pieces / Box



### POLYFIN ROOF OUTLET VERTICAL (FPO)

Made of polyurethane, thermal insulated with leaf guard, integrated sealing collar made of Polyfin® (FPO)

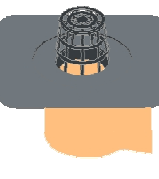
8014 / 201-00	DIA 75 (Type 2)	5 Pieces / Box
8014 / 202-00	DIA 110 (Type 2)	5 Pieces / Box
8014 / 203-00	DIA 125 (Type 2)	5 Pieces / Box



### POLYFIN ROOF OUTLET VERTICAL (ECB)

Made of polyurethane, thermal insulated with leaf guard, integrated sealing collar made of O.C.-Plan® (ECB)

8014 / 301-00	DIA 75 (Type 3)	5 Pieces / Box
8014 / 302-00	DIA 110 (Type 3)	5 Pieces / Box
8014 / 303-00	DIA 125 (Type 3)	5 Pieces / Box



### POLYFIN ROOF OUTLET ANGLED

Made of polyurethane, thermal insulated with leaf guard, integrated sealing collar made of polymeric bitumen

8015 / 101-00	DIA 75 (Type 4)	5 Pieces / Box
8015 / 102-00	DIA 110 (Type 4)	5 Pieces / Box
8015 / 103-00	DIA 125 (Type 4)	5 Pieces / Box



### POLYFIN ROOF OUTLET ANGLED (FPO)

Made of polyurethane, thermal insulated with leaf guard, integrated sealing collar made of Polyfin® (FPO)

8015 / 201-00	DIA 75 (Type 5)	5 Pieces / Box
8015 / 202-00	DIA 110 (Type 5)	5 Pieces / Box
8015 / 203-00	DIA 125 (Type 5)	5 Pieces / Box



### POLYFIN ROOF OUTLET ANGLED (ECB)

Made of polyurethane, thermal insulated with leaf guard, integrated sealing collar made of O.C.-Plan® (ECB)

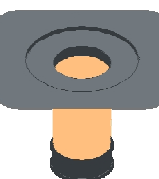
8015 / 301-00	DIA 75 (Type 6)	5 Pieces / Box
8015 / 302-00	DIA 110 (Type 6)	5 Pieces / Box
8015 / 303-00	DIA 125 (Type 6)	5 Pieces / Box



### POLYFIN WARM ROOF ATTACHMENT (FPO)

Made of polyurethane, thermal insulated, integrated sealing collar made of Polyfin® (FPO)

8016 / 201-00	Height 60 – 110 (Type 7)	5 Pieces / Box
8016 / 202-00	Height 60 – 150 (Type 7)	5 Pieces / Box
8016 / 203-00	Height 120 – 220 (Type 7)	5 Pieces / Box

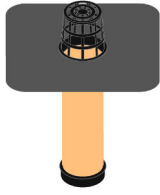


### POLYFIN WARM ROOF ATTACHMENT (ECB)

Made of polyurethane, thermal insulated, integrated sealing collar made of O.C.-Plan® (ECB)

8016 / 301-00	Height 60 – 110 (Type 8)	5 Pieces / Box
8016 / 302-00	Height 60 – 150 (Type 8)	5 Pieces / Box
8016 / 303-00	Height 120 – 220 (Type 8)	5 Pieces / Box

## ROOF OUTLET

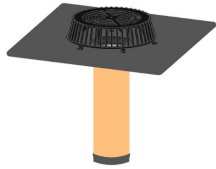


### POLYFIN RENOVATION OUTLET 95

Made of polyurethane, thermal insulated with leaf guard and sealing rings, integrated sealing collar

Renovation outlet with Polyfin® (FPO/PE) sealing sleeve light grey, backwater sure  
8024 / 101-00 100 – 140 mm 1 Pieces / Box

Renovation outlet with O.C.-Plan® (ECB) sealing sleeve black, backwater sure  
8024 / 201-00 100 – 140 mm 1 Pieces / Box

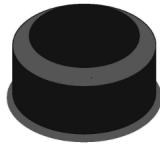


### POLYFIN RENOVATION OUTLET 125

Made of polyurethane, thermal insulated with leaf guard and sealing rings, integrated sealing collar

Renovation outlet with Polyfin® (FPO/PE) sealing sleeve light grey, backwater sure  
8024 / 102-00 133 – 165 mm 1 Pieces / Box

Renovation outlet with O.C.-Plan® (ECB) sealing sleeve black, backwater sure  
8024 / 202-00 133 – 165 mm 1 Pieces / Box



### POLYFIN RAIN COVER

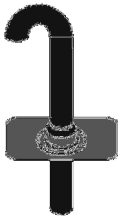
Made of PA,

Polyfin® rain cover black, with fastening ring suitable for vent pipe system DIA 100

8022 / 002-00 DIA 100 1 Pieces / Box

Polyfin® rain cover black, with fastening ring suitable for vent pipe system DIA 150

8022 / 004-00 DIA 150 1 Pieces / Box

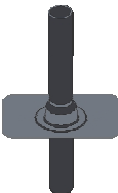


### POLYFIN CABLE FEED - THROUGH

Made of polyurethane, thermal insulated, integrated sealing collar, 750 mm long connecting pipe with a 180° arc, deflector and sealing ring

Cable bushing with Polyfin® (FPO/PE) sealing sleeve light grey

8025 / 101-00 DIA 100 1 Pieces / Box



### POLYFIN SYSTEM VENT PIPE

750 mm HDPE pipe, rain deflector from PA, base unit with integrated sealing collar

Vent pipe system with Polyfin® (FPO/PE) sealing collar light grey

8019 / 202-00 DIA 100 1 Pieces / Box

8019 / 204-00 DIA 150 1 Pieces / Box

Vent pipe system with O.C.-Plan® (ECB) sealing collar black

8019 / 302-00 DIA 100 1 Pieces / Box



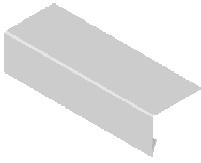
### POLYFIN BASE PLATE

Made of PUR with sealing ring and integrated sealing collar made of polymer bitumen

8020 / 102-00 DIA 100 1 Pieces / Box

8020 / 104-00 DIA 150 1 Pieces / Box

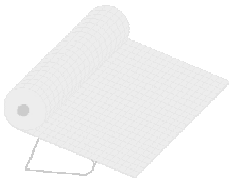
## ACCESSORIES



### POLYFIN METAL SHEET

Application: as drip edge profile at bracket mounted gutters or roof edge profile with laminated Polyfin-membrane on the top side

0260 / 001-05 POLYFIN Metal sheet light grey	1 m x 2 m	Pallet / 30 sheets
0160 / 001-05 POLYFIN Metal sheet black	1 m x 2 m	Pallet / 30 sheets
0260 / 001-11 POLYFIN Metal sheet light grey	1 m x 30 m	Pallet / 4 Coils
0160 / 001-11 POLYFIN Metal sheet black	1 m x 30 m	Pallet / 4 Coils

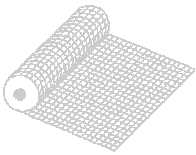


### POLYFIN BLD SK LOW THERMAL LOAD VAPOR BARRIER

Properties in relation to fire: Building material class B2 according to DIN 4102-1, class E according to DIN EN 13501-1, heating value <math><10.500 \text{ KJ} / \text{m}^2</math>, sd-value > 1.500 m

Description: Fabric-reinforced cold applied self-adhesive laminated aluminum foil as a vapor barrier to be bonded on trapezoidal steel decking for buildings according to industrial construction guidelines and DIN 18234

8017 / 102-01 POLYFIN BLD SK approx.0.30 x 1.500 mm, length 50 m 75 m<sup>2</sup> / Roll



### POLYFIN BLD LOW THERMAL LOAD VAPOR BARRIER

Properties in relation to fire: Building material class B2 according to DIN 4102-1, class E according to DIN EN 13501-1, heating value <math><10.500 \text{ KJ} / \text{m}^2</math>, sd-value > 1.500 m

Description: Fabric-reinforced laminated aluminum foil as a vapor barrier for loose installation on trapezoidal steel decking for buildings according to industrial construction guidelines and DIN 18234

8017 / 102-01 POLYFIN BLD approx.0.20 x 1.500 mm, length 50 m 75 m<sup>2</sup> / Roll



### POLYFIN CONTACT ADHESIVE W

Application: contact bonding of unbacked FPO- and ECB-roofing membranes to several surfaces One-component-adhesive based on synthesis caoutchouc, solvent-based

8018 / 000-02 POLYFIN Contact Adhesive W 9 kg / Cans



### POLYFIN PUR-ADHESIVE

Application: for bonding laminated roofing membranes and insulation materials, one-component polyurethane adhesive, solvent-free

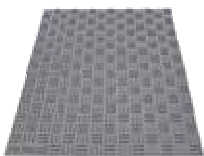
8002 / 000-00 POLYFIN PUR-Adhesive



### POLYFIN BITUMEN PRIMER

Application: as odourless primer, solvent-free

8002 / 000-00 POLYFIN Bitumen Primer 10 kg / Cans



### POLYFIN MAINTENANCE WAY TILE

Properties in relation to fire: Class E according to DIN EN 13501-1

Description: Structured surface plate made of FPO for creating the maintenance walkways on Polyfin roofing membranes of unused roof areas. The plates are to be welded with hot air on Polyfin roofing membranes. Dimensions: 7 mm x 785 mm x 590 mm, weight per plate about 2.5 kg.

8106 / 002-02 POLYFIN Maintenance way Tile approx. 200 Tiles / Pallet



### POLYFIN WALKWAY TILE

Application: for creation of Walkways on flat roofs, made of rubber granulate incl. 4 fixing connections

Density: 20.8 kg/m<sup>2</sup> or 5.2 kg/ tiles

Dimensions: 30 x 500 x 500 mm, 4 tiles = 1 m<sup>2</sup>

8101 / 001-01 POLYFIN Walkway Tile approx. 180 Tiles / Pallet

## ACCESSORIES

---



### POLYFIN STAINLESS STEEL TENSION BAND AND LOCK

Application: for fixing of POLYFIN sealing sleeves

8011 / 000-01 POLYFIN Stainless Steel Tension Band

5 m / Piece

8012 / 000-00 POLYFIN Lock for Stainless Steel Tension Band

Piece

---



### HOT-AIR HANDWELDING MACHINE

Manufacturer Leister, Type Triac S, 230 Volt, 1.600 Watt  
Wide slot nozzle 2 mm x 40 mm

8007 / 000-00 Hot-Air Handwelding Machine

Piece

---



### PRESSURE ROLLER

With silicone roll covering, ball bearing, width 40 mm

8009 / 000-00 Pressure Roller

Piece

---



### HEATING ELEMENT

For Leister Triac S, 230 Volt, 1,600 Watt

8008 / 000-00 Heating Element

Piece

---



### BOX

For Leister Triac S

8010 / 000-00 Box

Piece

---



POLYFIN AG  
Ziegelhäuser Straße 25  
D-69250 Schönau  
Telefon: +49 (0) 62 28 / 92 49-0  
Telefax: +49 (0) 62 28 / 92 49-50  
[www.polyfin.de](http://www.polyfin.de)  
[info@polyfin.de](mailto:info@polyfin.de)

